

imarble  
INCREDIBLY ITALIAN

**GENERAL**  
2020



INDIA'S LUXURY TILE BRAND

**QUTONE**



**QUTONE**



**REMARKABLE INNOVATIONS**

## ESTABLISHED IN 2008

WITH AN AIM TO CREATE MEANINGFUL EXISTENCE FOR ITS PATRONS AND TO CREATE A STATURE WHERE WE SYMBOLIZE GLOBAL **INNOVATION** AND **CREATIVITY**

### OUR VISION

Qutone desires to create meaningful existence for its patrons and want to create a stature where Qutone symbolizes for innovation and creativity globally.

### OUR MISSION

Qutone's mission is to be its customer's loyal partner in providing holistic yet elegant wall & floor decor solutions with consistently satisfying and delighting the customers bringing the Indian lifestyle to people all over the world in a creative mix of cultures.

### PHILOSOPHY

INVENT

INNOVATE

INSPIRE

### FOOTPRINTS

Presence in **60+** countries

**800+** Domestic Dealers

**100+** Luxuria Dealers

**3500+** Sub-Dealers

**12+** Experience Centers

**10** Regional Offices

Overseas Office & Research Center in **ITALY**

INDIA'S LUXURY TILE BRAND

**QUTONE**



Research by Global Research Services  
Process Reviewers: PricewaterhouseCoopers P.L.



INDIA'S LUXURY TILE BRAND  
**QUTONE**

**imarble**  
INCREDIBLY ITALIAN

**imarble**  
INCREDIBLY ITALIAN

SVELTO COLLECTION

**imarble**  
INCREDIBLY ITALIAN

**brillanté**  
COLLECTION

**CONTOUR**  
COLLECTION

**imarble**  
INCREDIBLY ITALIAN

FULL BODY STONEWARE

**35+**  
Sizes

**10+**  
Finishes

**1500+**  
Designs





Albino Beige

Polished



Intarsio Parquet Decor

Polished



Albino Brown

Polished



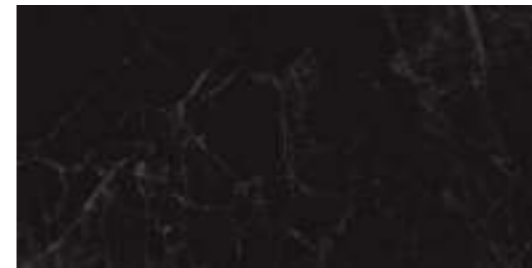
Ashford Bianco

Polished



Intarsio Trio Decor

Polished



Ashford Nero

Polished



Albino Grey

Polished



Intarsio Stripto Decor

Polished



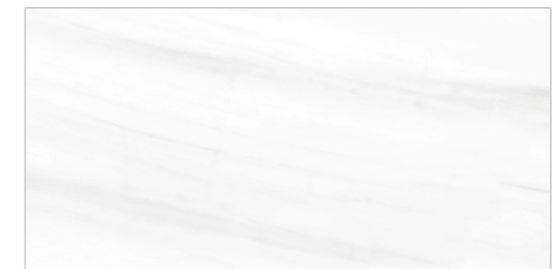
Albino Smoke

Polished



Intarsio Modelo Decor

Polished



Eldorado Bianco

Polished



Marquetry Flora Decor

Special Effect-Silk





Marquetry Parquet Decor Special Effect-Silk



Giorgio Beige Polished



Intarsio Parquet Decor Polished



Intarsio Squad Decor Polished



Meadow Grey Polished



Marquetry Parquet Decor Special Effect-Silk



Intarsio Trio Decor Polished



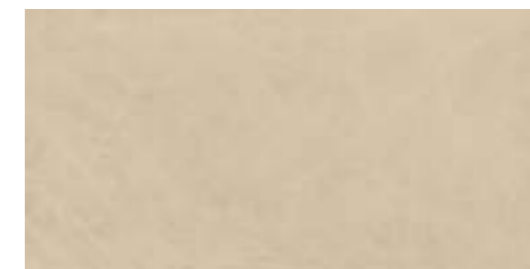
Glacier Carrara Polished



Marquetry Symba Decor Special Effect-Silk



Intarsio Parquet Decor Polished



Ornate Beige Polished



Marquetry Modello Decor Special Effect-Silk





Picasso Grey

Polished



Marquetry Gradient Decor

Special Effect-Silk



Picasso Smoke

Polished



Intarsio Trio Decor

Polished



Tunisia

Polished



Intarsio Squad Decor

Polished



Ritzy Natura

Polished



Intarsio Stripto Decor

Polished



Ritzy Forest

Polished



Marquetry Gradient Decor

Special Effect-Silk



Tuscan Bianco

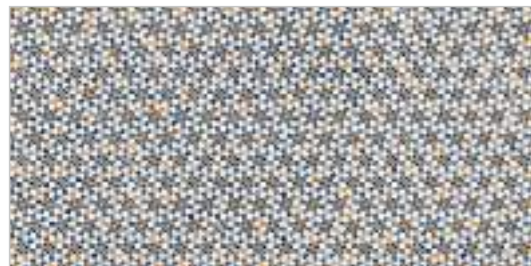
Polished



Intarsio Stripto Decor

Polished





Marquetry Flora Decor Special Effect-Silk



Blue Lagoon Silk Silk



Marquetry Abstracto Decor Special Effect-Silk



French Oat Silk Silk



French Oat Decor Special Effect-Silk



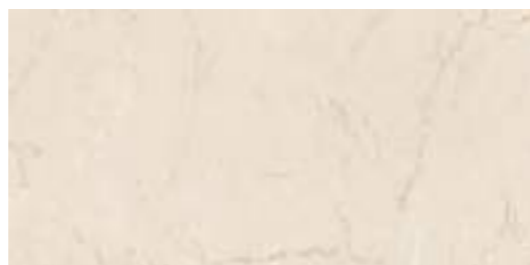
French Granola Silk Silk



Bottochino Jupiter Silk Silk



Marquetry Modello Decor Special Effect-Silk



Bottochino Intaglio Decor Special Effect-Silk



Marquetry Symba Decor Special Effect-Silk

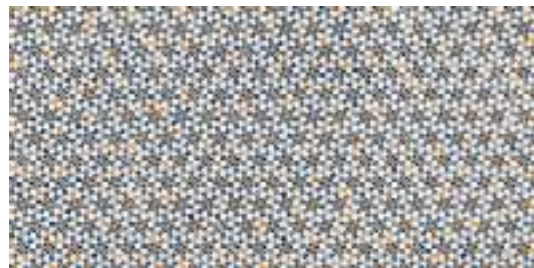


Glacier Carrara Silk Silk



Intarsio Modello Decor Polished





Marquetry Flora Decor Special Effect-Silk



Onyx Venus Silk Silk



Marquetry Modello Decor Special Effect-Silk



Intarsio Stripto Decor Polished



Tuscan Bianco Silk Silk



Marquetry Flora Decor Special Effect-Silk



Marquetry Gradient Decor Special Effect-Silk



Picasso Grey Silk Silk



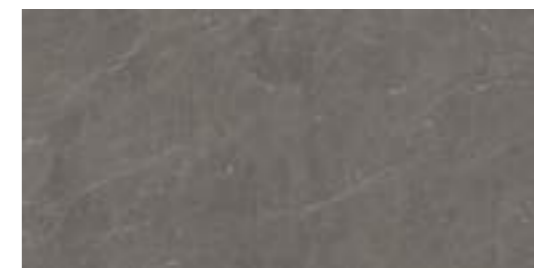
Intarsio Stripto Decor Polished



Sicilia Bianco Matt



Sicilia Bianco Decor Special Effect-Matt



Sicilia Grey Matt





Sicilia Beige Matt



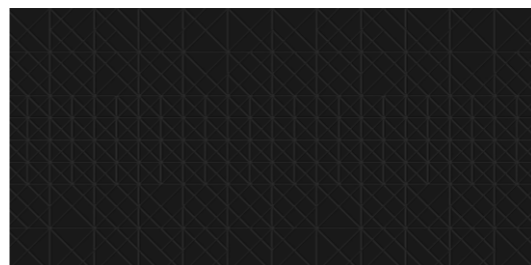
Sicilia Beige Decor Special Effect-Matt



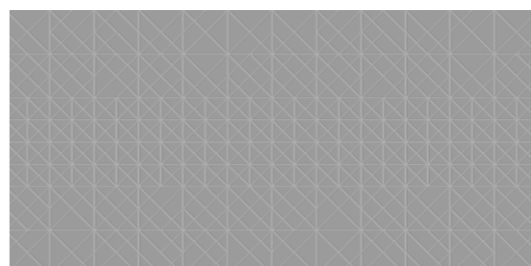
Sicilia Brown Matt



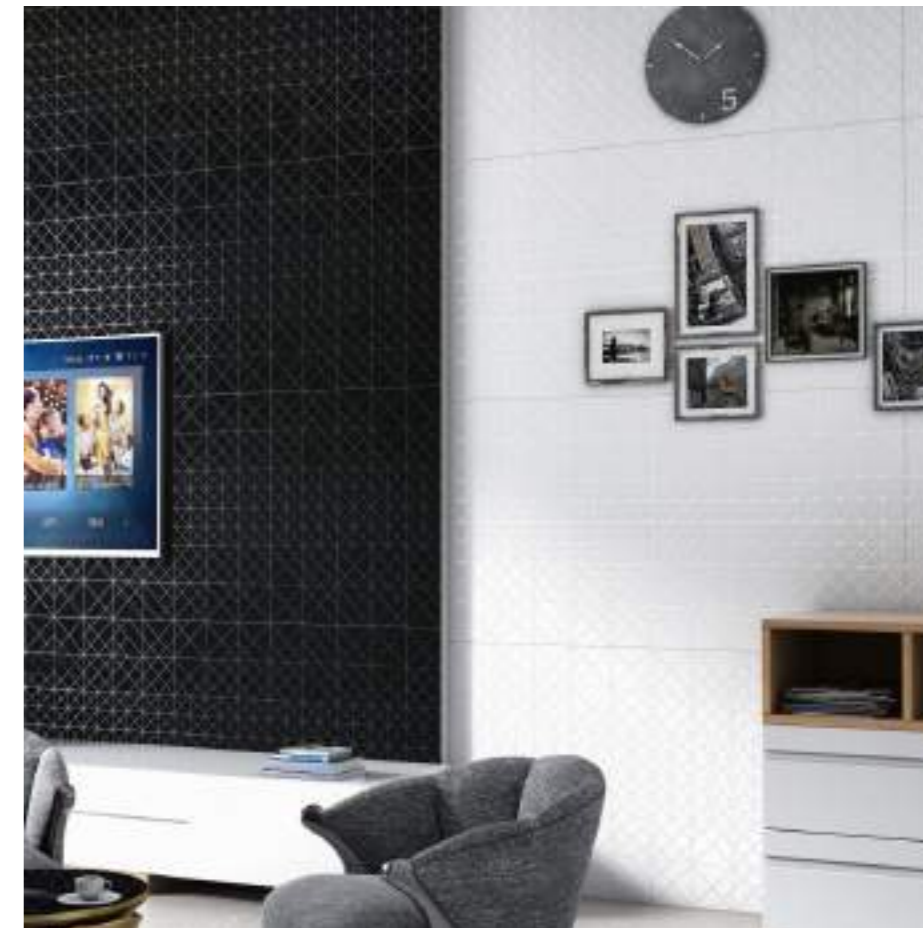
Oscillo Bianco Special Decor-Matt



Oscillo Nori Special Decor-Matt



Oscillo Grigio Special Decor-Matt



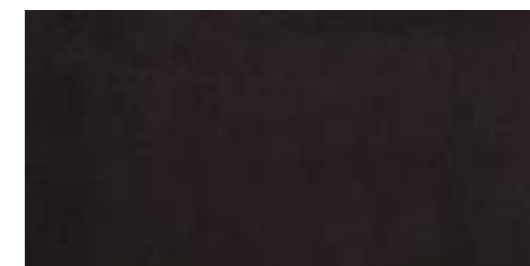
Sicilia Lilium Matt



Sicilia Lilium Decor Special Effect-Matt



Sicilia Mashroom Matt



Bronzite Earth Metallic-Matt



Bronzite Recto Metallic-Matt





Black River Polished



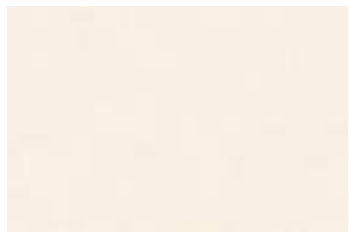
Botto Neo Polished



Cree Beige Polished



Deo Beige Polished



Marco Beige Polished



Santafe Bianco Polished



Deo Beige



Travolta Polished



Trivago Polished



Vector Grey Polished



Wilson Crema Polished



Vector Grey



Titan Beige



Summer White Polished



Taco Bruno Polished



Temptation Brown Polished



Temptation Grey Polished



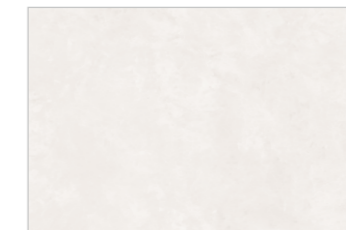
Titan Beige Polished



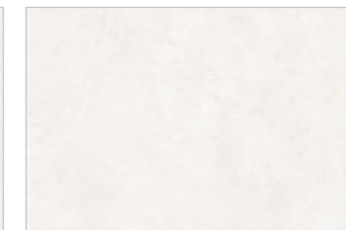
Titan Gris Polished



Cementis Crema



Cementis Bianco Matt



Cementis Crema Matt



Cementis Bruno Matt



Cementis Mocha Matt



Cementis Ash Matt





Bottichino Glossy

Polished



Breccia Aurora

Polished



Dyna

Polished



Dyna Fantastico

Polished



Esha Crema

Polished



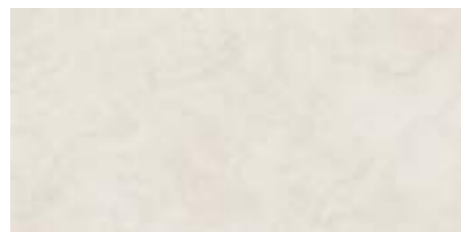
Esha Grey

Polished



Lilac

Polished



Marfil

Polished



Marvel

Polished



Statuario



Dyna



Mercury

Polished



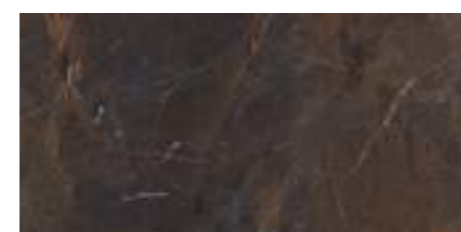
Onyx Bianco

Polished



Onyx Natural

Polished



Rain Forest

Polished



Statuario

Polished



Travertino Classico

Polished



Inco Metal

Matt



Amazon Beige

Pearl



Travertine Pearl

Pearl





Adrina Gris Polished



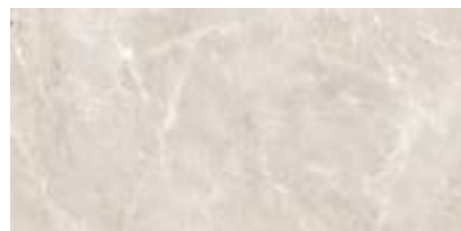
Alexa Crema Polished



Callie Bianco Polished



Canary Bianco Polished



Daisy Grey Polished



Dorico Steel Polished



Adrina Gris



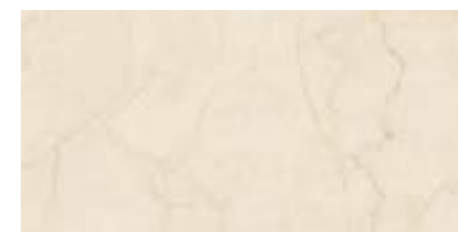
Flona Grey



Eliza Beige Polished



Emmy Dark Polished



Filo Beige Polished



Flona Grey Polished



French Forest Polished



Gemma Onyx Polished





Imperial Bianco

Polished



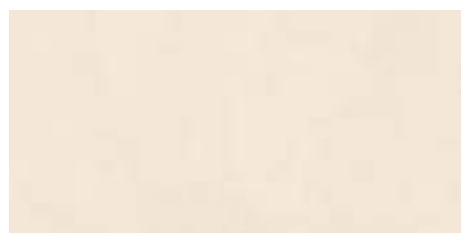
Imperial Grey

Polished



Irish Natura

Polished



Marbo Carnice

Polished



Roman Beige

Polished



Royal Pulpis Grey

Polished



Marbo Carnice



Statuario New

Polished



Statuario Skylar

Polished

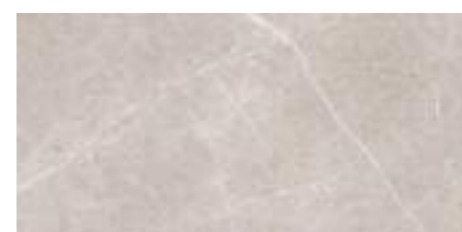


Vera Onyx

Polished



Vera Onyx



Matrix Gris

Matt



Verona Bianco

Matt



Verona Beige

Matt



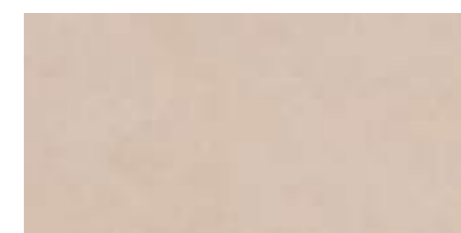
Matrix Nero

Matt



Verona Gris

Matt



Verona Taupe

Matt





Armani Gold

Polished



Armani Grey

Polished



Armani Steel

Polished



Armani Grey



Statuario Fantastico

Polished



Travertine Pearl

Pearl



Sata Royal

Sugar



Statuario Fantastico



Breccia Aurora



Black Beauty

Polished



Breccia Aurora

Polished



Mercury

Polished



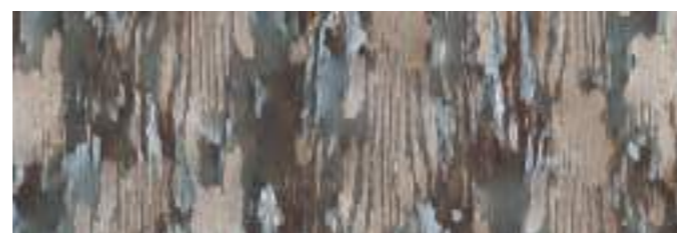
Bricola

Matt



Orient Nero

Matt



Quirky Cobalt

Matt



Leminum Red

Matt



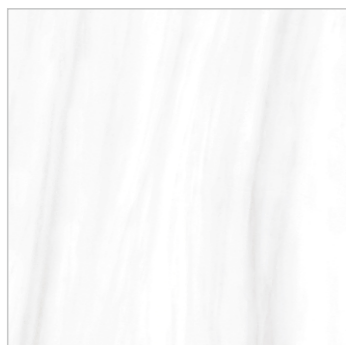
Portland Grey

Matt

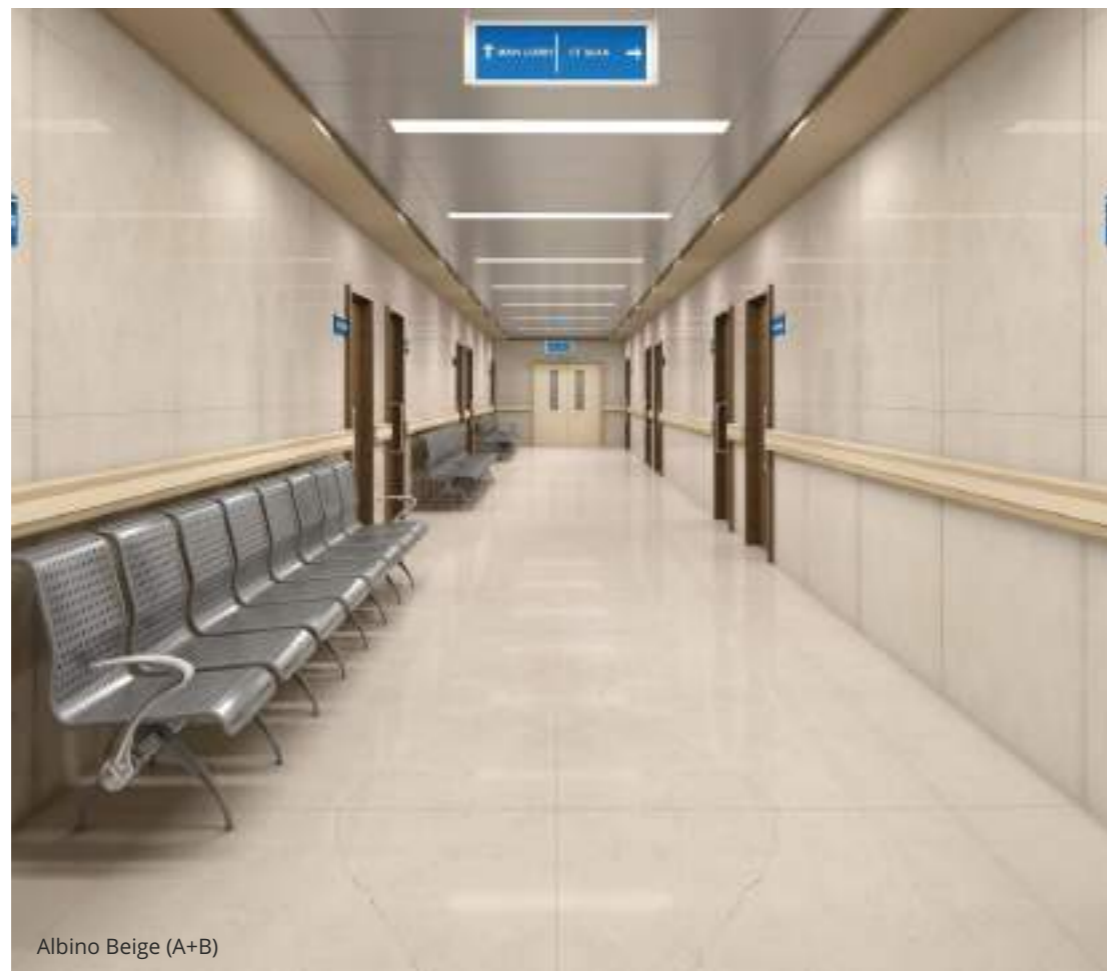




Albedo Beige (A+B) Polished



Eldorado Bianco Polished



Albedo Beige (A+B)



Picasso Grey Polished



Ritzy Natura Polished



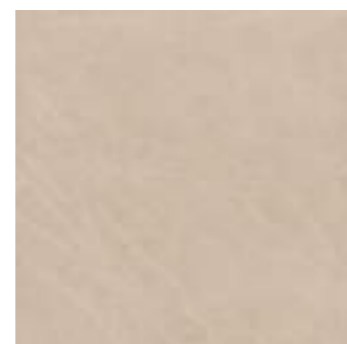
Picasso Grey



Ornate Beige



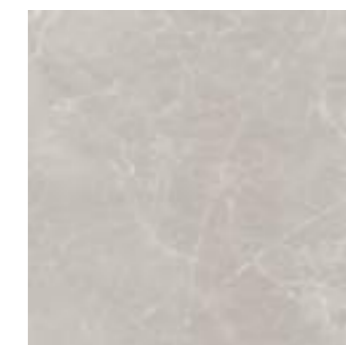
Meadow Grey Polished



Ornate Beige Polished



Tunisia



Tunisia Polished





Armani Gold Polished



Armani Grey Polished



Breccia Aurora Polished



Dyna Fantastico Polished



Armani Grey



French Steel



Esha Crema Polished



Esha Grey Polished



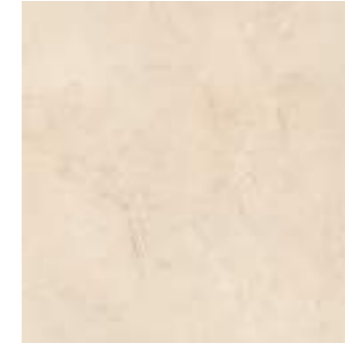
French Gris Polished



French Steel Polished



Marfil Polished



Marvel Polished



Rosso Crema Polished



Sarron Colin Fantastico Polished



Rosso Crema



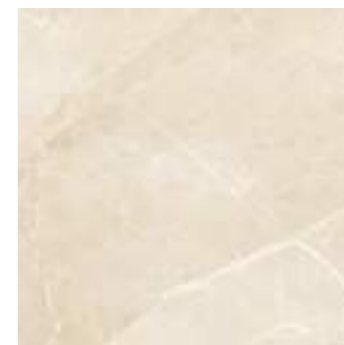
Statuario Classic



Statuario Classic Polished



Titanium Black Polished



Nivea Avorio Pearl



Nivea Grigio Pearl





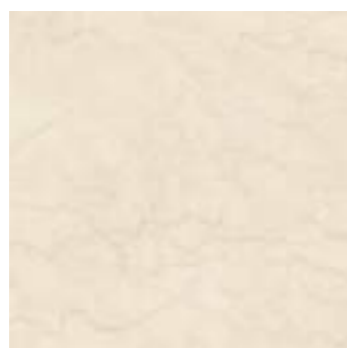
Callie Bianco Polished



Eliza Beige Polished



Emmy Dark Polished



Filo Beige Polished



Filo Beige



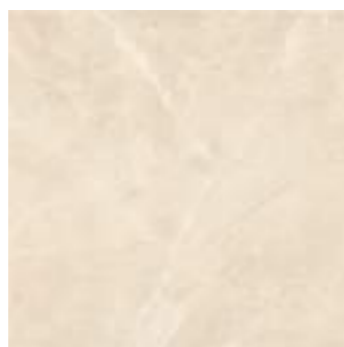
Royal Pulpis Bianco



Flona Grey Polished



Gemma Onyx Polished



Roman Beige Polished



Royal Pulpis Bianco Polished



Royal Pulpis Grey Polished



Vera Onyx Polished



Matrix Gris Matt



Matrix Nero Matt



Royal Pulpis Grey



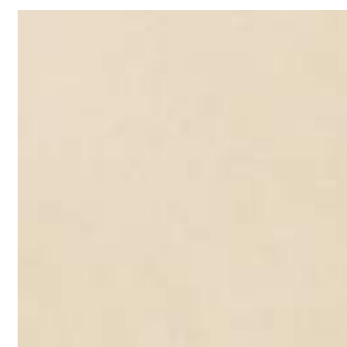
Verona Bianco



Verona Bianco Matt



Verona Gris Matt



Verona Beige Matt



Verona Tope Matt





Alaska Statuario (A+B) Polished



Aristo Statuario (A+B) Polished



Alaska Statuario (A+B)



Braziliano Natura (A+B) Polished



Onyx Minerale (A+B) Polished



Onyx Minerale (A+B)



Atlantis Beige (A+B)



Atlantis Beige (A+B) Polished



Perigia Bruno (A+B)



Perigia Bruno (A+B) Polished



Perigia Verde (A+B) Polished





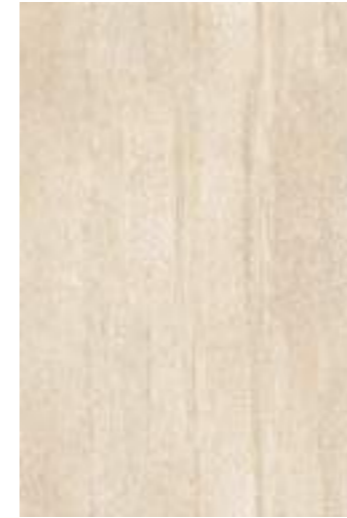
Albino Burberry Polished



Argentino Original Polished Dark



Argentino Original



Deo Beige Polished



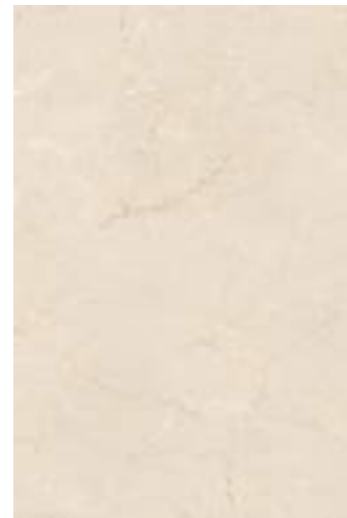
Dove Polished



Deo Beige



Botticino Beige



Botticino Beige Polished



Irish Bianco

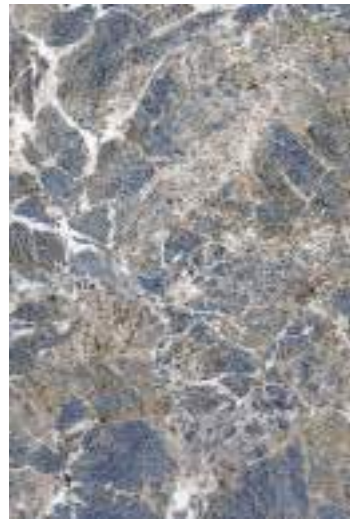


Irish Bianco Polished





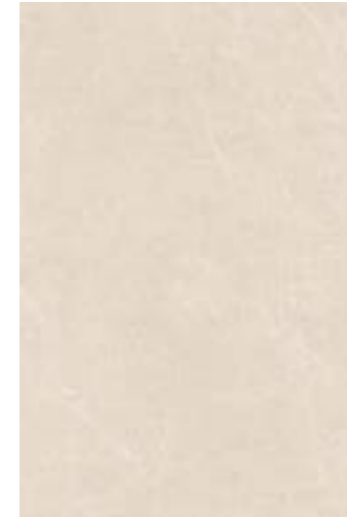
Marvel Polished



Nebula Sapphire Polished



Nebula Sapphire



Sicilia Beige Polished



Sicilia Grey Polished



Sicilia Beige



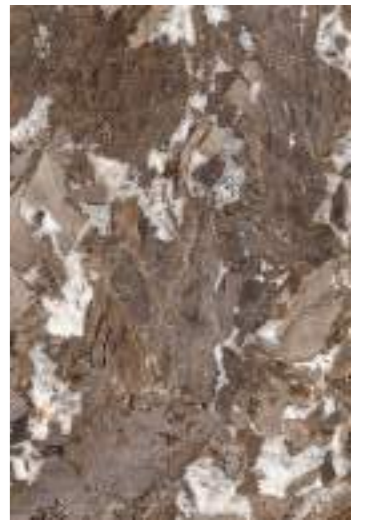
Nobre Verdis



Nobre Verdis Polished

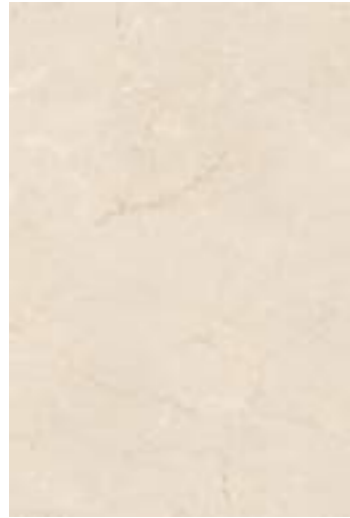


Argentino Original Silk



Argentino Original Silk SilkDark





Bottochino Beige Silk Silk



Dove Silk Silk



Bottochino Beige Silk



Merquina Gold Silk



SilkDark



Nobre Verdis Silk



Phedra Bianco

Matt Phedra Grey

Matt



Nobre Verdis Silk

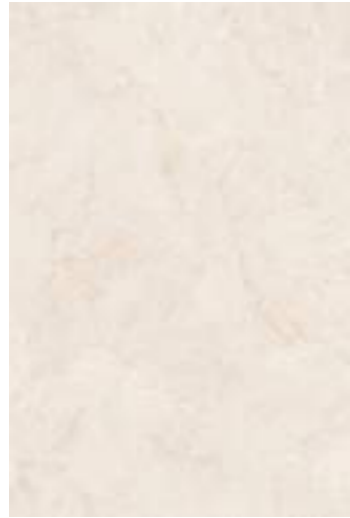


Emprador Brunette Silk SilkDark



Emprador Brunette Silk





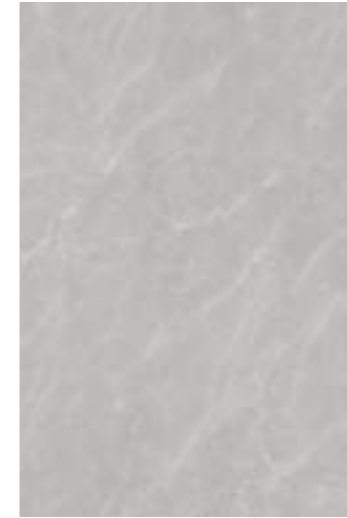
Amba Marfil Polished



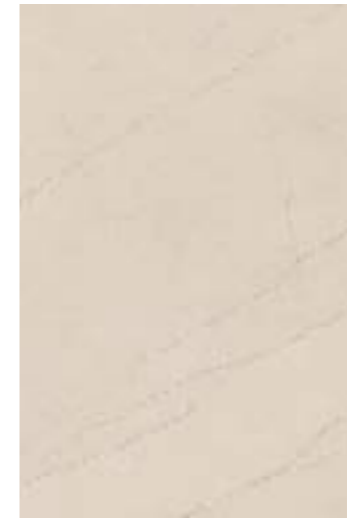
Antique Nuvo Polished



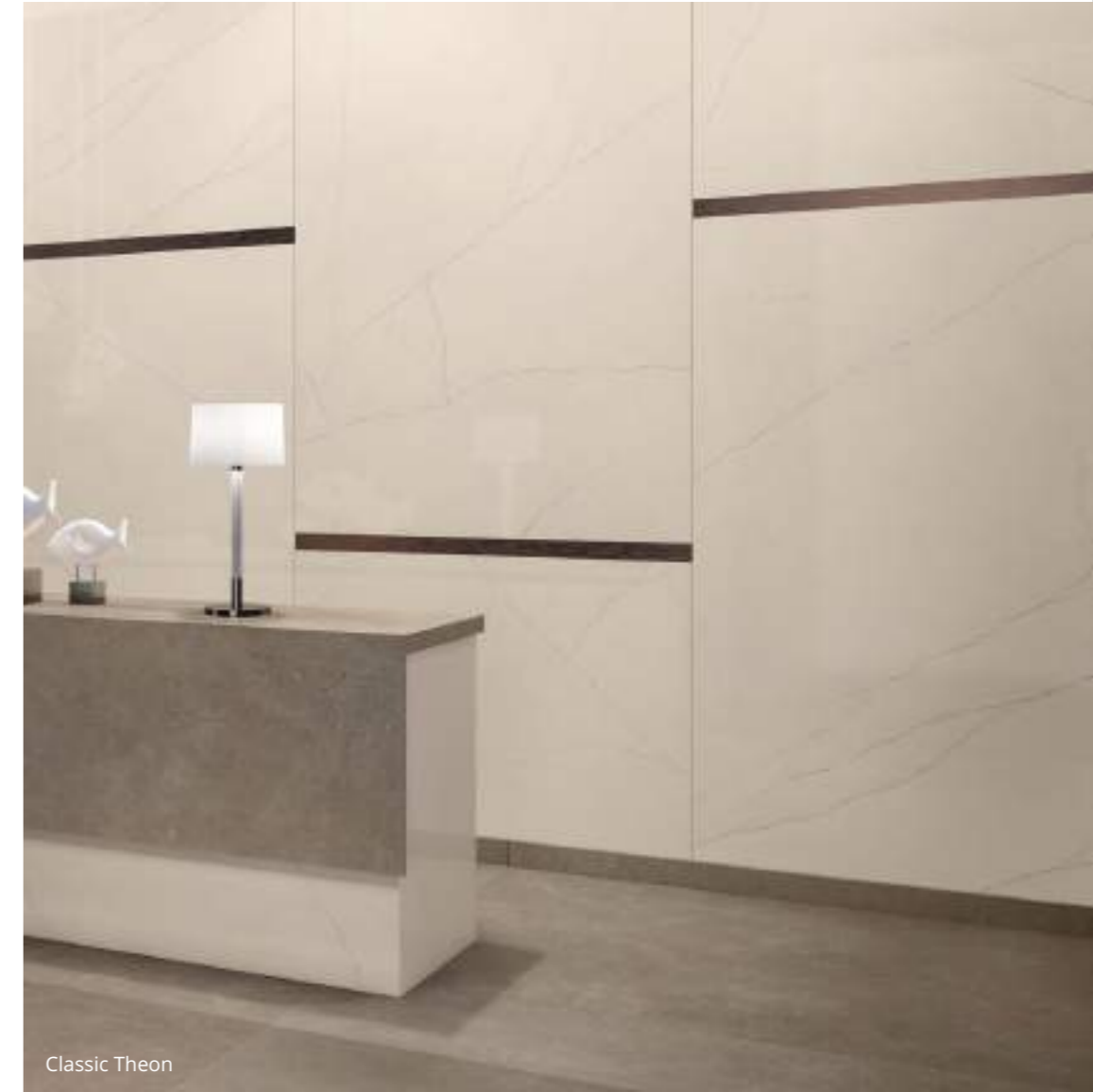
Antique Nuvo



Cartina Grey Polished



Classic Theon Polished



Classic Theon



Belgian Beige



Belgian Beige Polished



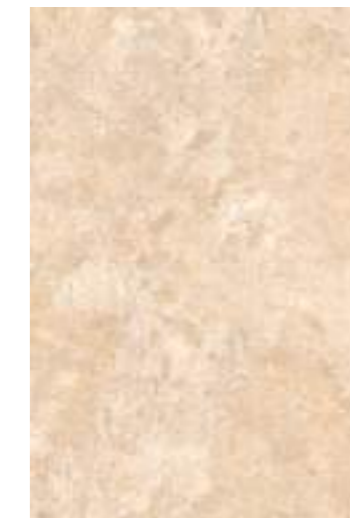
Blaze Bianco (A+B) Polished



Lora Breccia



Forma Marfil Polished



Lora Breccia Polished





Loft Steel Polished



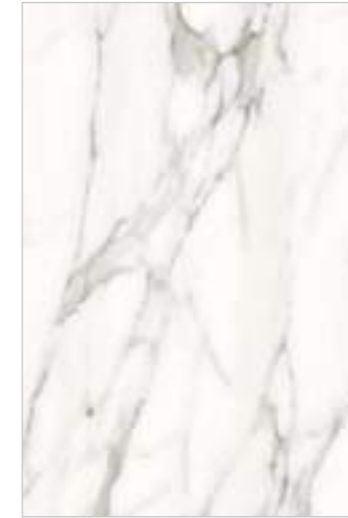
Superio Sombre (A+B) Polished



Superio Sombre (A+B)



Lora White Polished



Solo Polished



Tunisia Polished



Vertino Linea Polished



Lora White



Rasina (A+B)



Melody Bianco Polished



Rasina (A+B) Polished



Vintage Ivory (A+B)



Vintage Ivory (A+B) Polished





Blaze Bianco Silk (A+B) Silk

Forma Marfil Silk Silk

Forma Marfil Silk



Melody Bianco Silk Silk

Rasina Silk (A+B) Silk



Arron Gris Matt

Arron Nero Matt



Emerald Grey Matt

Emerald Nero Matt



Arron Gris & Nero



Tunisia Silk



Tunisia Silk Silk



Delmon Tope



Delmon Tope Matt





Albedo Beige (A+B)

Polished



Albedo Grey (A+B)

Polished



Eldorado Bianco

Polished



Albedo Grey (A+B)



Picasso Grey

Polished



Ritzy Natura

Polished



Tunisia

Polished



Ritzy Natura



Meadow Grey (A+B)



Meadow Grey (A+B)

Polished



Ornate Beige (A+B)

Polished



Tunisia



Tunisia Silk

Silk





Armani Gold

Polished



Armani Grey

Polished



Breccia Aurora

Polished



Dyna Fantastico

Polished



Armani Gold



French Grey

Polished



French Steel

Polished



Marfil

Polished



Rosso Crema

Polished



French Grey





Statuario Pearl

Polished



Statuario Classic

Polished



Statuario Super

Polished



Travertino Classico

Polished



Statuario Classic



Titanium Black

Polished



Metal Plate

Matt



Armani Bronze

Pearl



Nivea Avorio

Pearl



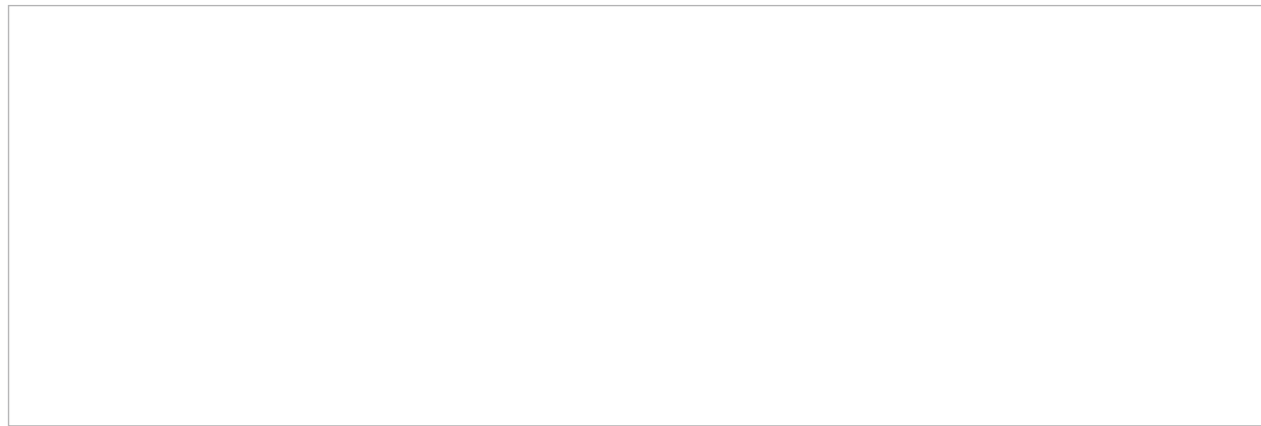
Nivea Grigio

Pearl



Nivea Avorio





Tierra Bianco

Also available in 1000x3000-12mm



Tierra Nero



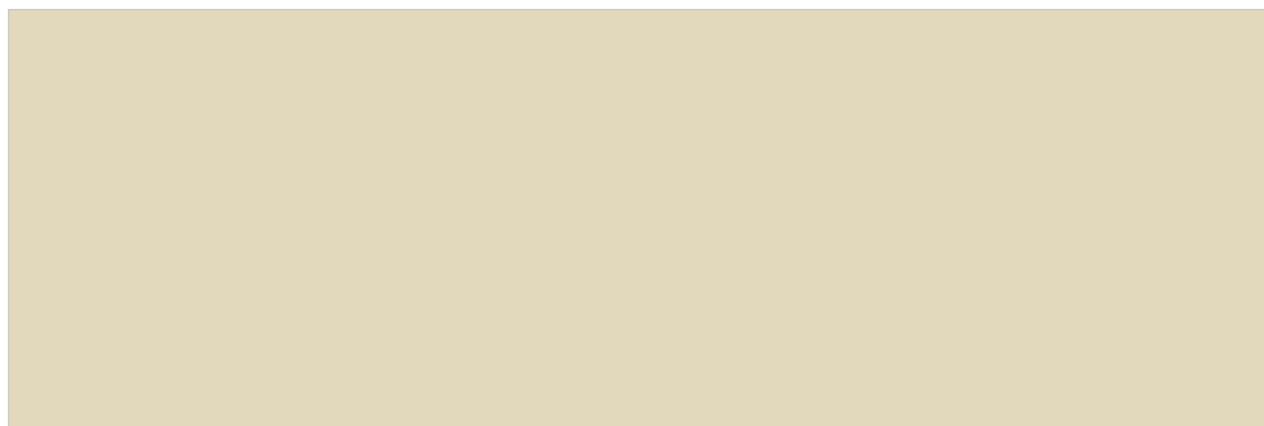
Tierra Gris



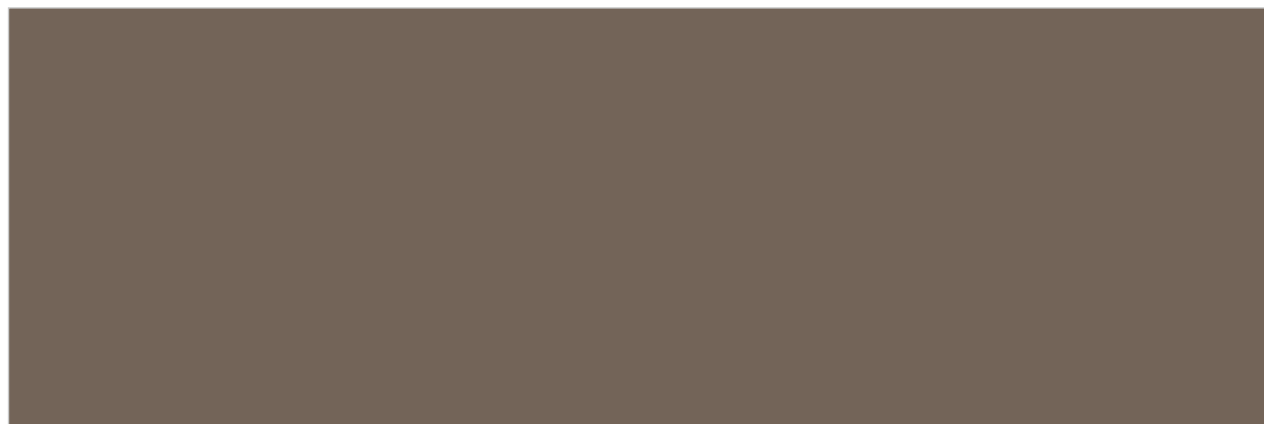
Tierra Smoke







Tierra Ivory



Tierra Brown



Tierra Taupe







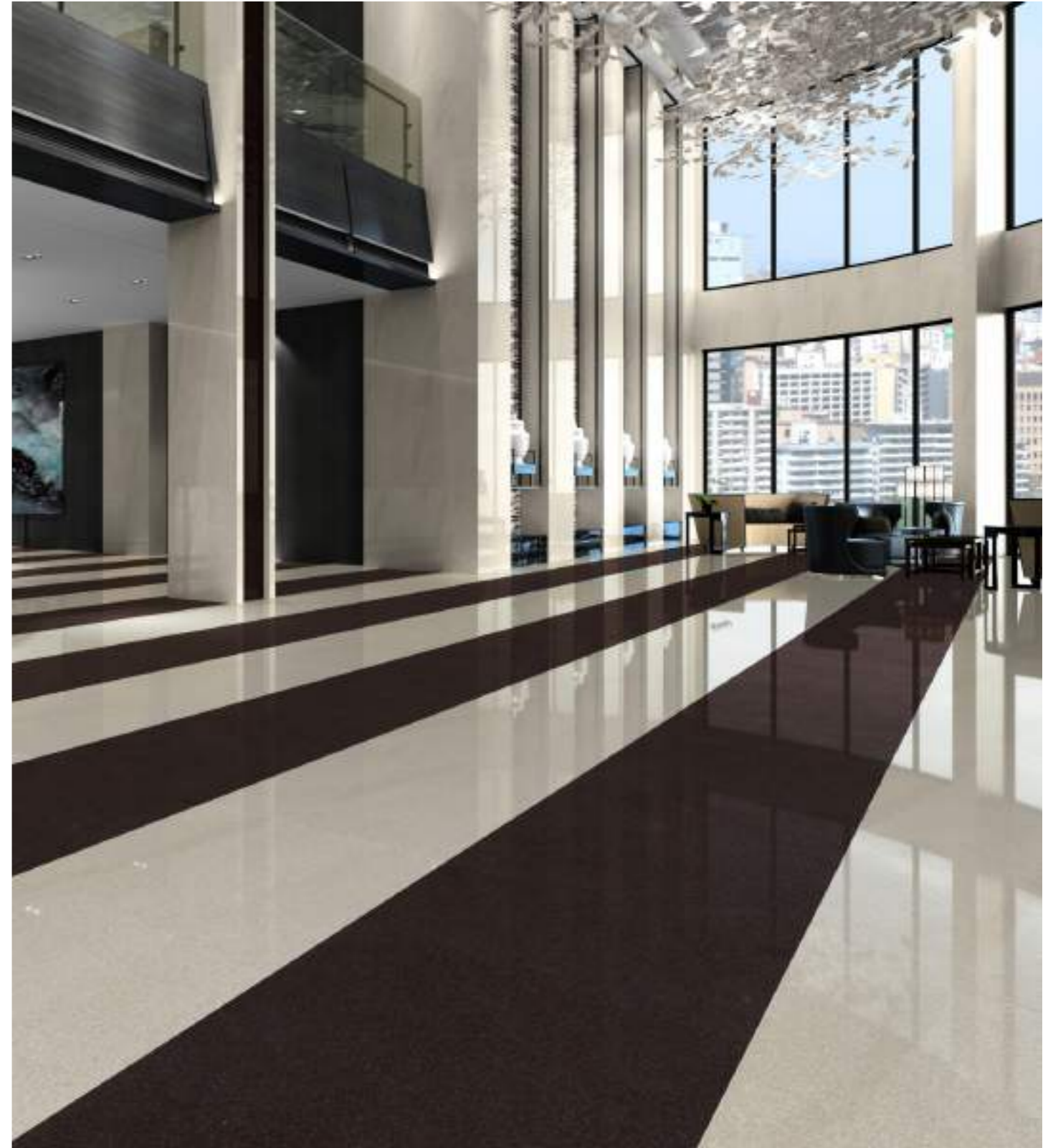
Techno Beige (12mm)

Polished



Techno Choco (12mm)

Polished







Black Grenito

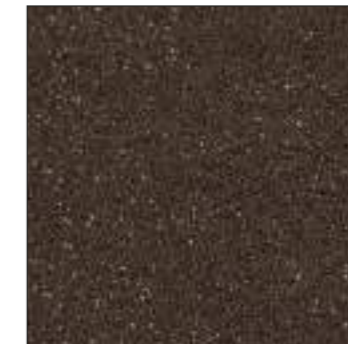


Black Grenito

Polished



Brown Grenito



Brown Grenito

Matt/Polished





## THERE ARE 5 PRIMARY STEPS OF TILE LAYING

**SURFACE PREPARATION**   **DRYLAYING**   **TILE LAYING**   **GROUTING**   **INITIAL CLEANING**

### UNDERLAYMENT FOR CERAMIC & VITRIFIED TILE / SLAB FLOORS

Ceramic & Vitrified Tiles/Slabs are paradoxically very strong and at the same time somewhat delicate. These materials are very hard and durable only when installed correctly.

Since these products are Fragile in nature, even minute errors in installation may cause severe and unrepairable damage/breakage, during or post installation.

The surface beneath the Tile play very important & vital role for the performance & durability of Floor Tiles. Thus the surface preparation for flooring is of great importance. Undulations, levelling, crack filling, proper bedding before laying the Tiles/Slabs should be carried out with highest precision & accuracy.

Qutone recommends the use of adhesive of class C3E according to EN12004 and SI according to EN12002 standards.

Please check the Tiles/Slabs thoroughly for any kind of manufacturing defects, colour & design uniformity etc. before laying / cutting the Tiles/Slabs for installation.

Make sure to carry out the inspection under the same lighting conditions that are similar to the area of Installation.

We recommend that you don't blend Tiles/Slabs from different batches or sizes.

Please read the Laying Instructions printed on the Tile/Slab box carefully and advise the Tile Settler to adhere to the guidelines provided by the Tiles and adhesives manufacture as well.

Please note that Size & Shade Variation is inherent characteristic of any Kiln Fired product. Hence, Slight variation in Colour & Size is bound to be there in any Ceramic / Vitrified Tiles and Slabs.

Positive Bend (Center Curvature) is a functional property of Ceramic/Vitrified Tiles & Slabs. It is kept there by design as per the permissible limits in International / ISI Standards specification and is not a defect.

We take utmost care to provide products with minimum deviations, remaining well within the allowed limits as per the Technical Specifications widely followed by Ceramic Tile Manufactures Globally.

### SURFACE PREPARATION

Plaster the surface of the floor/wall to be tiled smooth and complete the plastering and curing at least two weeks prior to tiling.

The surface on which the tiles are to be laid should be clean and free from dirt and loose particles to avoid contamination. Before laying floor tiles on old mosaic and cement floors, the floor should be clipped with a chisel or sharp tool so that the surface is sufficiently nailed to grasp the mortar.

### DRY LAYING

It is highly recommended to Dry Lay the Tiles/slabs before installation, to ensure perfection in appearance, design & colour uniformity and to over come any possible defect while carrying out actual installation.

Tiling should preferably be started from the center area so that cut tiles, if any, come only on the sides. Arrange tiles in the desired layout to ensure that there are equally cut tiles at either end. Proper gradient of floor should be provided for ease in drainage & ensuring avoidance of water accumulation.

Qutone recommends laying of Tiles/Slabs with adhesive. Proper care should be taken in terms of selection of adhesive according to intended area/use of Tiles or Slabs. Various adhesive for varied application are available in the market. Proper market consultation with adhesive supplier is recommended. Follow the instruction of tile adhesive manufacturer for laying Tiles/Slabs.

### TILE LAYING

Take care of the following things before fixing the tiles:

- Entry and exit points should have doormats in order to avoid abrasive dust particles from entering the floor area.
- Avoid movement on damp surface
- Avoid pulling heavy, pointed or sharp objects on the flooring surface

### INDOOR INSTALLATION

Make sure to leave 2-3 mm space between the tiles. Create movement joints every 25 mtrs. or as directed by an expert. The adhesive must be applied to the back of the tile and the substrate with a notched trowel

### OUTDOOR INSTALLATION

Try to keep movement joints of 4-6mm at all the sides of the Tile/Slab. Create movement joints every 9-12 mtrs. or as directed by an expert. Always respect the building's structural joints while laying the tiles.

Use of proper mortar/adhesive and proper tapping & levelling of Tile/Slab is very important to ensure that there are not hollow space between Tile/Slab and sub floor - as the hollow area beneath the Tile/Slab surface may lead to breaking of Tiles/Slabs despite the high strength and durability of the product.

### TILE OVERTILE INSTALLATION

Ensure that the old tiles are fixed properly. If not, remove any unsecured tile and fill the gaps with suitable mortar. Before laying, wash the old tiling with water and soap to get rid of any dust, grease or other impurities and let it dry.

Apply bonding resin before tiling over the old tiles. After this step, follow the instructions for indoor or outdoor installation. For fixing the tiles on wall dado, we strictly recommend the use of adhesive. Please follow the manufacturer's instructions for the same. We do not recommend the use of sand and cement for fixing Tiles/Slabs.

Mark and lay the tiles from the center of the area to be tiled so that cut tiles, if any, will be on the outer edge towards the wall. It is advisable to maintain a gap of 1 mm to 2 mm between adjoining tiles to allow possible expansion as per.

### GROUTING

Qutone highly recommends all Tiles/Slabs to be installed with a joint gap of 3-6mm depending up on the size, application area, intended use of the Wall/Floor surfaces and the local climate & substrate.

All joint gaps must be filled with Synthetic, Epoxy, Polyurethane or Silicon Grouts depending up on the application area and intended use of the Wall/Floor surfaces. It is advised to follow application instructions of the grout manufacturers.

For specialized application and functional performance of Tiles/Slab surface, adequate consultation of expert, Civil Engineer, Architect is advised.

For Aesthetic look and enhancing the beauty of the finished surface, selection of adequately matching or constructing grout colour should be selected. The surface must be cleaned with damp sponge to remove residuals of grout to stick around to grout is settled/curved.

### INITIAL CLEANING

After laying the Tile/Slabs, the surface may contain residuals of cement mortar, adhesive or any other fixing/grouting material. This can seriously affect the appearance of the Tile/Slabs and impact the aesthetic outlook. Hence, initial cleaning, immediately after the masonry work is done is of great importance.

It is necessary to clean the surface with wet sponge before grouting material has hardened. We recommend use of an acid decalcifying product as well.

Once the grout is settled for 24 to 48 Hrs. Clean the surface with detergent, Tiles cleaner. Rub the surface rigorously to obtain maximum cleaning, rinse thoroughly with plenty of water to remove all the traces of cleaning agent, detergent used.

While carrying out the cleaning process, refer and adhere to the cleaning advise/instruction of the adhesive & grout manufactures carefully.

### GENERAL RECOMMENDATIONS

For commercial and heavily used surface areas such as airports, hospitals, supermarkets and any public space with heavy pedestrian traffic which are thus subject to considerable soiling, it is necessary to use automatic cleaning machines with suction of the washing liquids.

This not only allows deep cleaning, but also the continuous removal of liquids containing substances that cause soiling, thus preventing the formation of films which are very difficult to remove.

Any detergent can be used in the desired concentration for cleaning the high technology products, with the exception of HYDROFLUORIC acid (HF) or its compounds, according to UNI-EN 176 standards. In order to keep costs limited and speed-up maintenance operations, the concentration of the detergent must always be as low as possible. For raised floors we suggest to choose bright or polished surfaces in large sizes: these materials can be dry-cleaned or with the minimum use of liquids.

After the floor is laid, it is necessary to make very accurate initial cleaning with proper products.

### DETERGENTS

The detergents are essential when laying new materials on old floors and for preparing the support surface perfectly as well as after installation to remove all traces of cement, adhesive or sealant from the newly laid materials.

### MATT MATERIALS

For these materials, after completing the steps described in the section, Initial Cleaning, you only need to clean the floor with hot water containing small quantities of an alkaline detergent. On these types of surface, it is not advisable to apply waterproofing product: the absence of porosity causes the waterproofing agent to deposit on the surface in an uneven way and to have unpleasant aesthetic effects.



## GENERAL ADVISE

Tiles/Slab Installation is more of a Technical & Specialized work rather than just a Tile Fixing. Hence we recommend to hire professional & skilled Tile Settlers for fixing the Tiles on your Wall, Floor or Cladding surfaces.

No product can compensate the poor workmanship but a good workmanship can surely enhance the aesthetic look of the product and amplify the beauty of your ambience and work surfaces.

Tiles and Slabs are aesthetic products intended to decorate your work surfaces, besides providing hygienic & protective covering. It is advised to look at them from an adequate viewing distance to have true contemplation of Designs.

Product Quality issues such as Shade/Colour Variation, Size Variation, Surface Quality, Line Matching, Design Continuity, Bend (Center or Edge Curvature), damage during transit & handling can be checked & verified before the Tile/Slab is Installed.

Post installation such issues neither can be verified nor rectified. Hence company does not entertain or accept any claim related with such issues if the Tile/Slab installation is done.

Post installation, issues like crazing, cracks in glazed surface or body (Except due to mechanical damage, faulty installation, work area conditions, unintended use of product) can be considered by the company as product complaints.

## CARE & MAINTENANCE

Thanks to the characteristics of the production process (high firing temperature, raw materials of great quality, sinterization process), the surface of the Qutone Tiles & Slabs are waterproof (the water absorption is minimum). Therefore the dirt cannot penetrate, but it is necessary to remove it from the surface.

For cleaning the surface, do not use detergents containing waxes or waxing products. In order to avoid the forming of greasy layers, for choosing the most appropriate detergent, refer to the following table. After the installation of floors, particularly those made with polished materials, the surfaces should be adequately protected with particle board or other suitable materials in order to protect the surface from dirt and damage due to on-site processing.

Below are some of the substances indicated to remove stains. The instructions are grouped by type of product and do not contain references to specific detergents. However, these features are clearly indicated on the labels of detergents available in the market.

## DRY LAYING

Qutone Tiles & Slabs are high temperature resistant. However, it is always advisable to use an adequate pan-support whenever hot cookware should be placed on the slab surface

Use a chopping board to cut/prepare foods instead of bare Tile/Slab surfaces.

Qutone Tiles & Slabs are very tough and have high impact resistance. However- avoid falling of sharp object /heavy substances directly on to the surface

Qutone Tiles & Slabs matt finishes have high scratch resistance compare to polished, satin & pearl finishes. However, avoid dragging, scrolling or moving heavy objects on the surface. Instead lift & move the objects from one place to another

Avoid using strong acids high concentration of floor cleaners. Manufacturer guidelines on the use of floor cleaners should be strictly followed

Possible breakages can be repaired with adequate and specific resins. Before repairing, check that the colour of the resins that are used for the reparation operations and the slab color are the same

If stains have contracted on the Tile or Slab surface for a short time, they can be easily removed with the use of a rag and hot water. Avoid movement on damp surface.

## CLEANING ADVICE

Cement adhesive	- Acidic detergent
Grouting remnants	- Acidic detergent
Organic stains	- Alkaline detergent
Felt pen	- Solvent (Methylated Spirits, Acetone, Ethanol)
Rubber remnants	- Alkaline detergent, Solvent
Pencil marks	- Soft rubber
Grease and dirt	- Bicarbonate and water
Dyes	- Dilute bleach solution
Iodine or bromine Blood	- Acidic detergent, hydrogen peroxide or dilute bleach solution, ammonia
Silicone	- Hydrogen peroxide or dilute bleach solution
Coffee, tea, food, fruit juice or make-up	- Vitro-ceramic hob scraper, Cloth soaked in acetone. Normal detergent dissolved in hot water
	- Hydrogen peroxide or bleach

Standards according to ISO 13006 / EN 14411 / IS 15622-2017 (Group B1a): Dry - Pressed Ceramic Tiles (Glazed Vitrified Tiles)

CHARACTERISTIC	TEST METHOD	REQUIREMENTS	QUTONE STANDARD
<b>DIMENSIONS &amp; SURFACE QUALITY</b>			
Deviation in Length & Width	ISO-10545-02	± 0.10%	Within Criteria
Deviation in Thickness	ISO-10545-02	± 5.00%	Within Criteria
Straightness of Sides	ISO-10545-02	± 0.10%	Within Criteria
Rectangularity	ISO-10545-02	± 0.10%	Within Criteria
Surface Flatness	ISO-10545-02	± 0.50%	Within Criteria
Surface Quality	ISO-10545-02	Min. 95% of the Tiles shall be free from visible defects that would impair the appearance of a major area of the Tiles	Within Criteria
<b>PHYSICAL PROPERTIES</b>			
Water Absorption	ISO 10545-03	Average ≤ 0.08%, Individual 0.10% Max.	Within Criteria
Modulus of Rapture	ISO 10545-04	R ≥ 35 N/mm <sup>2</sup>	Compliant
Breaking Strength	ISO 10545-04	Min. 1300 N	Compliant
Moisture Expansion	IS 15622 - 3	0.02 Max	Compliant
Moh's Hardness	EN 101	Min. 5	Compliant
Surface Abrasion Resistance	ISO 10545-07	Class II Min.	Compliant
Linear Thermal Expansion	ISO 10545-08	Max. 6.0 x 10 <sup>-6</sup>	Compliant
Thermal Shock Resistance	ISO 10545-09	Min. 10 Cycles	Compliant
Crazing Resistance	ISO 10545-11	4 Cycles at 7.5 Bar Min.	Compliant
Impact Resistance	ISO 10545-05	0.55 Min.	Compliant
Frost Resistance	ISO 10545-12	Required	Compliant
Resistance to Deep Abrasion (Unglazed Tiles)	ISO 10545-06	175 Max.	Compliant
Bulk Density	IS 15622 - 2	2.20 g/cc	Compliant
<b>CHEMICAL PROPERTIES</b>			
Resistance to High & Low Concentrations of Acids & Alkalis	ISO 10545-13	As per Mfg.	No visible effect
Resistance to household chemicals & swimming pool salts	ISO 10545-13	Min. GB	Compliant
Stain Resistance	ISO 10545-14	Min. Class 3	Compliant

Dimension	Slab/Box	Sq. Mtr.	Sq. Ft.
1000x3000mm (Stoneware)	1	3.00	32.29
1200x2400mm	1	2.88	31.00
1200x1800mm	1	2.16	23.25
1200x1200mm	2	2.88	31.00
800x2400-12mm	1	1.92	20.66
800x2400mm	2	3.84	41.33
800x1600mm	2	2.56	27.55
800x1200mm	2	1.92	20.67
600x1200mm	4	2.88	31.00

**Disclaimer:** Product images shown in this Catalogue are for Design Representation. All efforts are made to show accurate colour of the product but actual product colour may differ from the printed image due to printing limitations. It is advised to see the product samples for actual colour reference • Shade variation is inherent characteristic of ceramic products. Hence different sizes and batches of same design may have variation in colours • Please follow the Tile Laying instructions printed on the box before installing the Tiles • Company may change the designs, colours, randomness or book-match without prior intimation • Due to continuous technology upgrade technical specification of the products may change without prior intimation.





## **QUTONE CERAMIC PVT. LTD.**

### **Corporate**

11, Titanium, Corporate Road, Opp. Prahalad Nagar Garden,  
Satellite, Ahmedabad - 380015, Gujarat, India.  
info@qutoneceramic.com

### **QUTONE EXPERIENCE CENTERS**

#### **Ahmedabad**

Sindhu Bhavan Road, Nr. Sindhu Bhavan, Bodakdev,  
Ahmedabad - 380054. Gujarat. Cell: +91 70690 01513

#### **Bangalore**

Casa Qutone, #41, St. John's Church Road, 1st Floor, Above  
GIRIS, Shivajinagar, Opp. Coles Park, Bangaluru- 560051.  
Karnataka. Cell: +91 8040922655

#### **Chandigarh**

Plot No. 1619 (JLPL), Industrial Area, Sector 82, Airport Road,  
Mohali- SAS Nagar, Mohali- 160055. Punjab.  
Cell: +91 9915040096

#### **Chennai**

41/158, North Usman Road, T.Nagar, Chennai- 600017.  
Tamil Nadu. Cell: +91 9909042354

#### **Cochin**

288 J, M. R. Arcade, Pathadipalam, Metro Piller No. 333,  
South Kalamaserry, Cochin- 682033. Kerala.  
Cell: +91 9846096516

#### **Delhi**

Plot No. 117, Sector 44, Gurgaon - 122003, Haryana.  
Tel.: +91 124 4223770

#### **Hyderabad**

Central Square, Ground Floor, 8-2-309/7/1, Road Number 14,  
GS Nagar, Nandi Nagar, Banjara Hills, Hyderabad - 500034.  
Telengana. Cell: +91 7680906394

#### **Jaipur**

Plot No. 8, 2nd Floor, Rajeev Vihar, Opp. Metro Pillar No. 30,  
Near Manasrover Metro Station, Jaipur- 302020.  
Rajasthan. Cell: +91 9929604641

#### **Morbi**

Survey No. 163/2, 8-A National Highway Ta. Wankaner,  
Dhuva - 363621. Gujarat. Cell: +91 9983523637

#### **Mumbai**

2nd Floor, Chedda Arcade, Khira Nagar, S V Road,  
Santacruz (West), Mumbai- 400054. Maharashtra.  
Cell: +91 9909042399

#### **Pune**

259, Shaniwar Peth, Vishnukrupa Hall Building,  
Pune - 411030. Maharashtra. Cell: +91 7718856710

